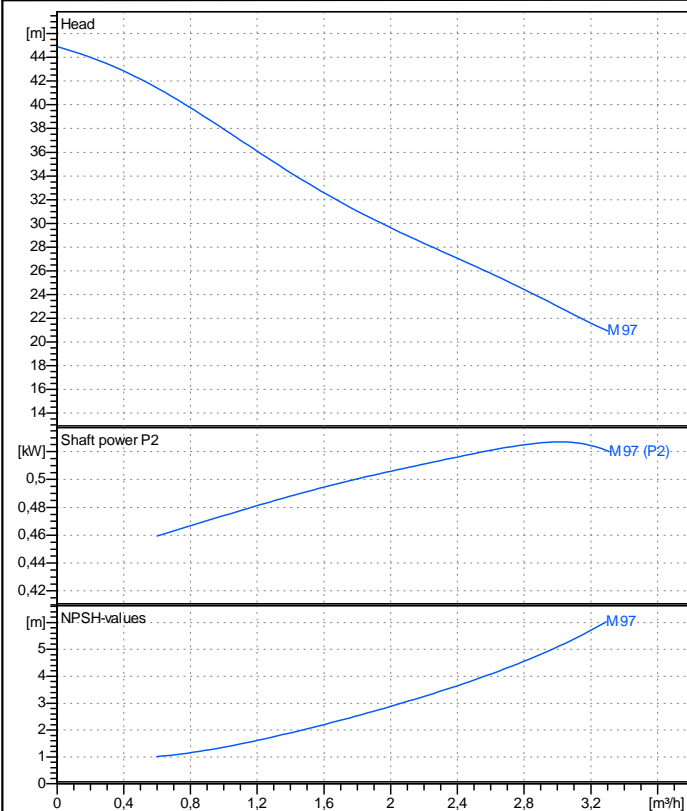


Receiver

From

Company name
Respons. Department
Person in charge
Phone number
Fax no
E-mail address



Operating data specification

Nominal flow	m³/h	0
Nominal head	m	0
Static head	m	0
NPSH - v value of plant	m	0
Inlet pressure	bar	0,09793
Fluid	Water, pure	
Operating temperature t A	°C	20
Density at t A	kg/m³	998,3
Kin. viscosity at t A	mm²/s	1,005

Pump

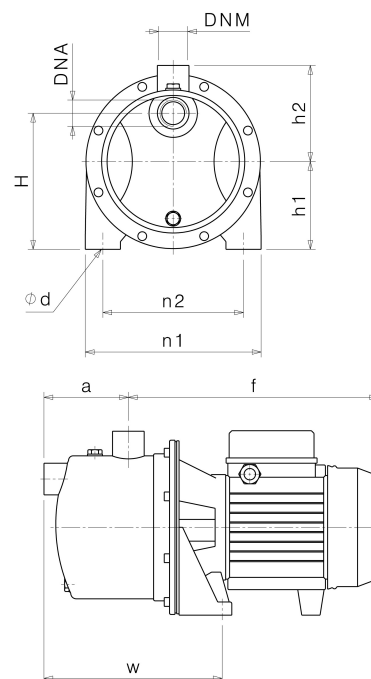
Pump name	M 97		
Size			
Design			
Speed	rpm	2850	No of stages 1
Impeller type			
Flow	Nominal	m³/h	
	Max-	m³/h	3,3
	Min-	m³/h	0
Head	Nominal	m	
	Max-	m	44,9
	Min-	m	20,9
Head H(Q=0)	m	44,9	
NPSH 3%	m		
Max. working pressure	bar	4,4	
Shaft power	kW		
Efficiency	%		
Max absorbed power	kW	0,52696	

Materials Pump

Pump body	Stainless steel AISI 304 (1.4301)		
Impeller	Thermoplastic resin		
Seal disc	Stainless steel AISI 304 (1.4301)		
Shaft	Stainless steel AISI 420 (1.4028)		
Diffuser	Thermoplastic resin		
Complete ejector	Thermoplastic resin		
Tenuta meccanica	BXPB (Gra/Cer/NBR)		

Dimensions in mm

a	98
DNA	G 1"
DNM	G 1"
f	247
H	155
h1	100
h2	106
n1	200
n2	160
od	10
w	209



Remarks:

Project	Project ID	Created by	Created on 2019-02-13	Last update
---------	------------	------------	--------------------------	-------------